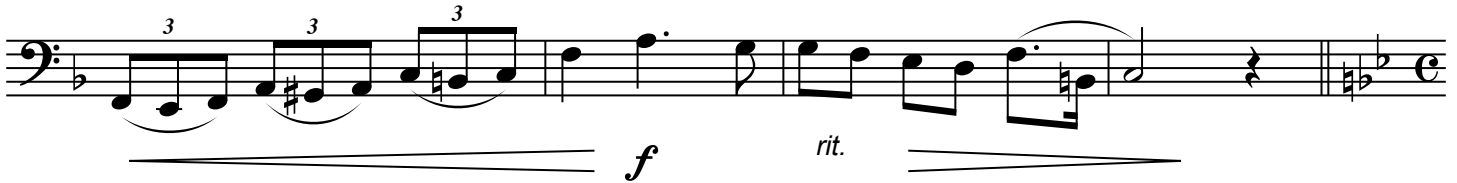




ETSBOA Senior Clinic Audition Piece

Tuba Rotation 1

Cantabile ♩ = 96



Ragtime Feel ♩ = 100



Tuba

Scales Proposal 2006-07

Staff 1: Tuba scale in B-flat major, C major, and D major. The scale starts on B-flat, moves to C, and then to D. The notation includes a treble clef, a key signature of one flat (B-flat), and a common time signature (C). The scale is written in a single line with a double bar line at the end.

Staff 2: Tuba scale in E-flat major, F major, and G major. The scale starts on E-flat, moves to F, and then to G. The notation includes a treble clef, a key signature of two flats (E-flat), and a common time signature (C). The scale is written in a single line with a double bar line at the end.

Staff 3: Tuba scale in A-flat major, B-flat major, and C major. The scale starts on A-flat, moves to B-flat, and then to C. The notation includes a treble clef, a key signature of three flats (A-flat), and a common time signature (C). The scale is written in a single line with a double bar line at the end.

Staff 4: Tuba scale in B-flat major, C major, and D major. The scale starts on B-flat, moves to C, and then to D. The notation includes a treble clef, a key signature of one flat (B-flat), and a common time signature (C). The scale is written in a single line with a double bar line at the end.

Staff 5: Tuba scale in E-flat major, F major, and G major. The scale starts on E-flat, moves to F, and then to G. The notation includes a treble clef, a key signature of two flats (E-flat), and a common time signature (C). The scale is written in a single line with a double bar line at the end.

Staff 6: Tuba scale in A-flat major, B-flat major, and C major. The scale starts on A-flat, moves to B-flat, and then to C. The notation includes a treble clef, a key signature of three flats (A-flat), and a common time signature (C). The scale is written in a single line with a double bar line at the end.

Staff 7: Tuba scale in B-flat major, C major, and D major. The scale starts on B-flat, moves to C, and then to D. The notation includes a treble clef, a key signature of one flat (B-flat), and a common time signature (C). The scale is written in a single line with a double bar line at the end.

Staff 8: Tuba scale in E-flat major, F major, and G major. The scale starts on E-flat, moves to F, and then to G. The notation includes a treble clef, a key signature of two flats (E-flat), and a common time signature (C). The scale is written in a single line with a double bar line at the end.

Staff 9: Tuba scale in A-flat major, B-flat major, and C major. The scale starts on A-flat, moves to B-flat, and then to C. The notation includes a treble clef, a key signature of three flats (A-flat), and a common time signature (C). The scale is written in a single line with a double bar line at the end.

Staff 10: Tuba scale in B-flat major, C major, and D major. The scale starts on B-flat, moves to C, and then to D. The notation includes a treble clef, a key signature of one flat (B-flat), and a common time signature (C). The scale is written in a single line with a double bar line at the end.